



The G3 Series Operator Panel

# The G3 Series Operator Panel

- Connect using up to five serial protocols at any one time!
- Ethernet port as standard for enhanced integration.
- USB download for the fastest updates available today.
- CompactFlash storage for virtually unlimited data logging.
- Sunlight visible display for indoor or outdoor applications.
- Even *more* incredibly easy-to-use software!



# The G3 Series Operator Panel

## ■ G303

- 3” monochrome display
- 4MB flash memory
- Customizable function key labels



# The G3 Series Operator Panel

## ■ G306

- 5.7-inch Ultra-STN Passive Matrix 256 Color QVGA 320 X 240 pixel LCD
- 640x480 pixel LCD
- 8MB flash memory



# The G3 Series Operator Panel

## ■ G308

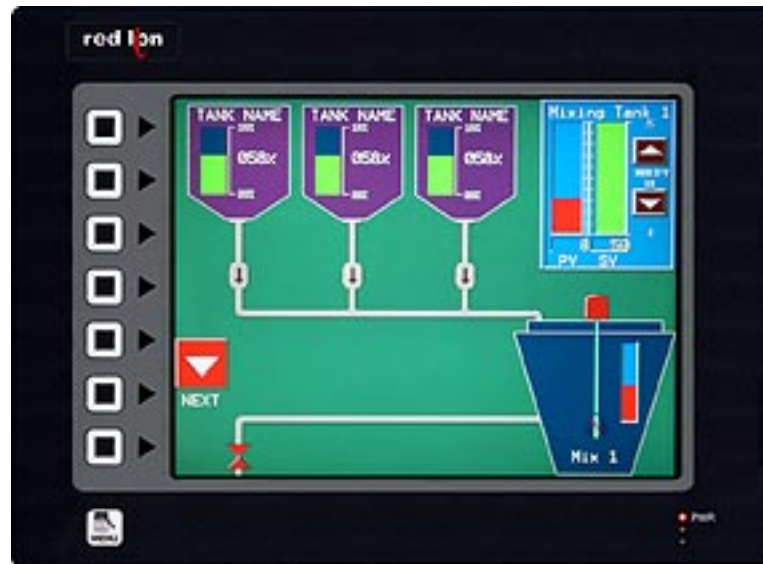
- 7.7" DSTN color touch screen (G308C) or
- 8.4" 256-color 640x480 TFT Display (G308A)
- 640x480 pixel LCD
- 8MB flash memory



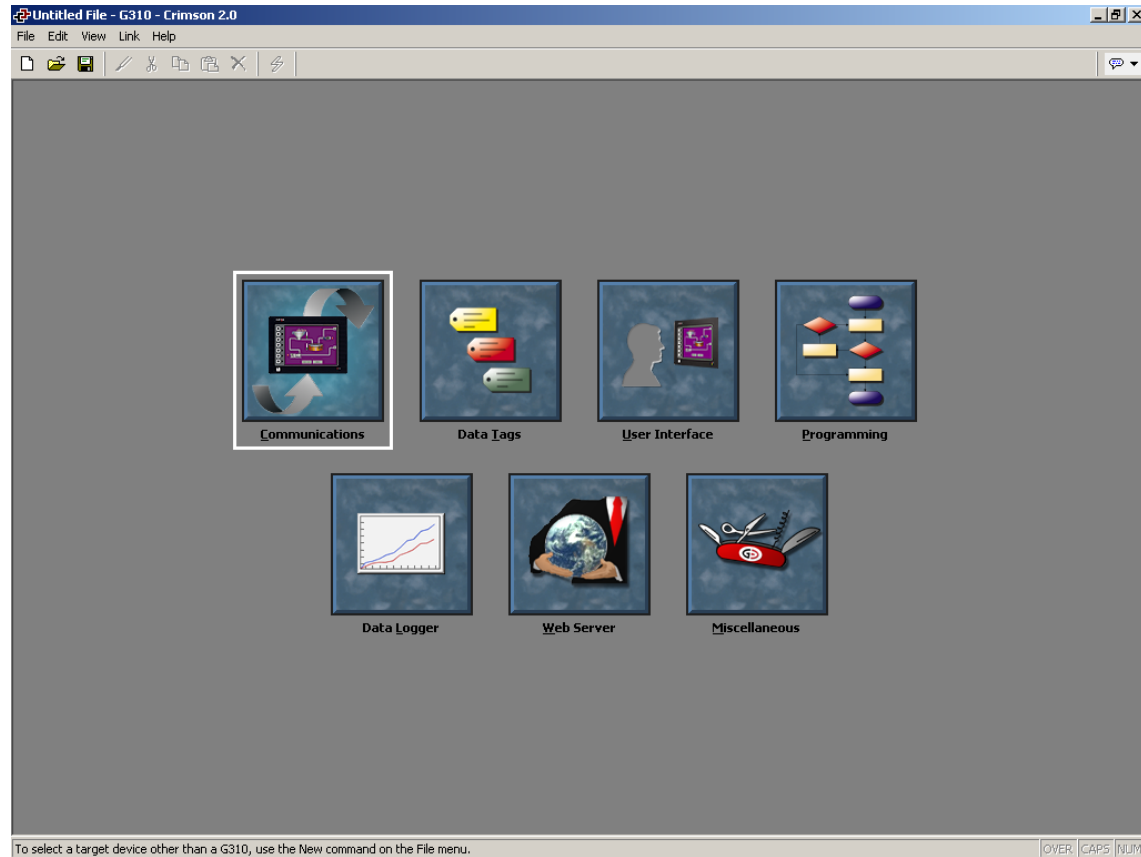
# The G3 Series Operator Panel

## ■ G310

- 10” TFT color touch screen
- 640x480 pixel LCD
- 8MB flash memory

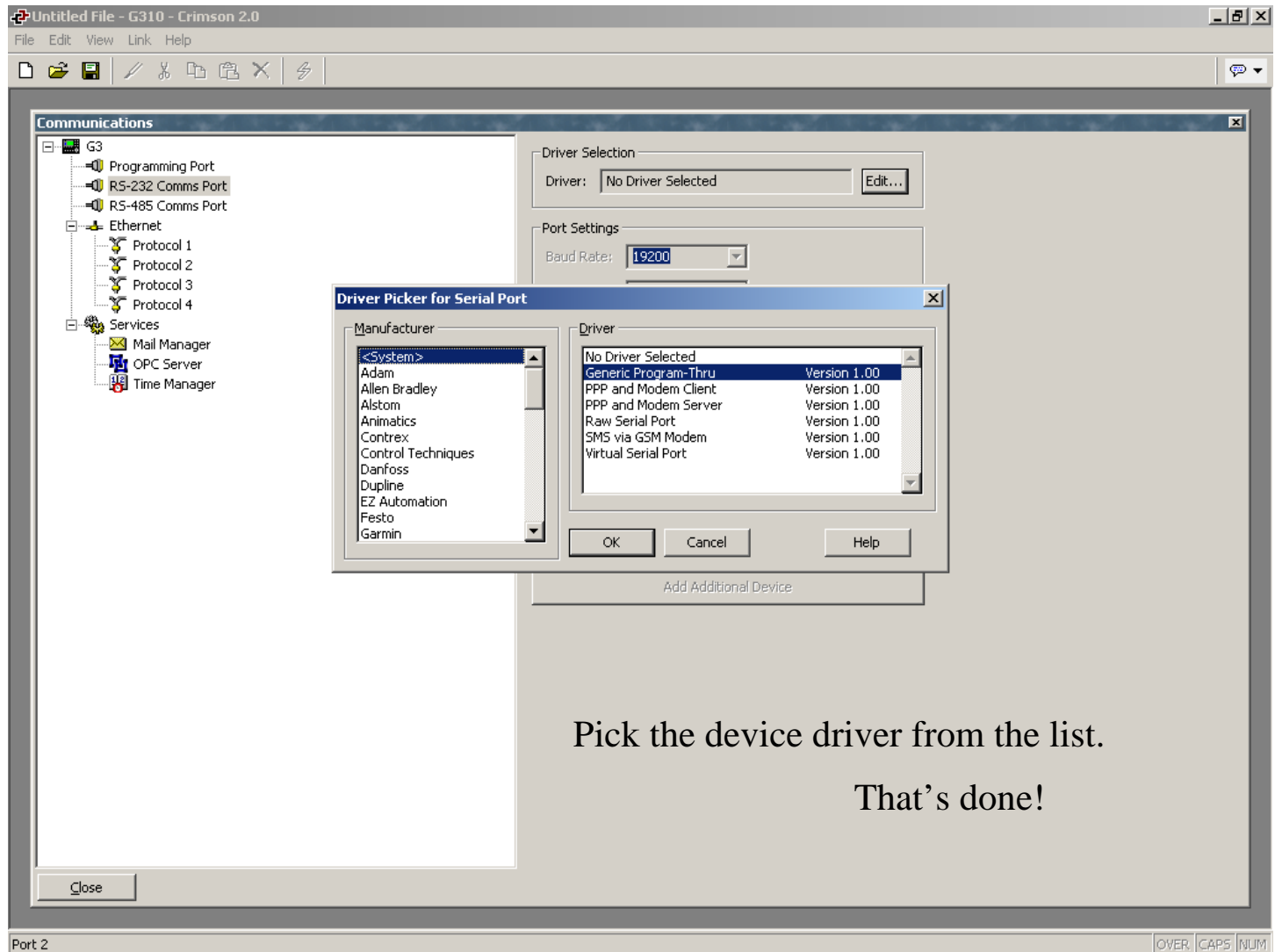


# Crimson 2.0 - It's easy and FREE!



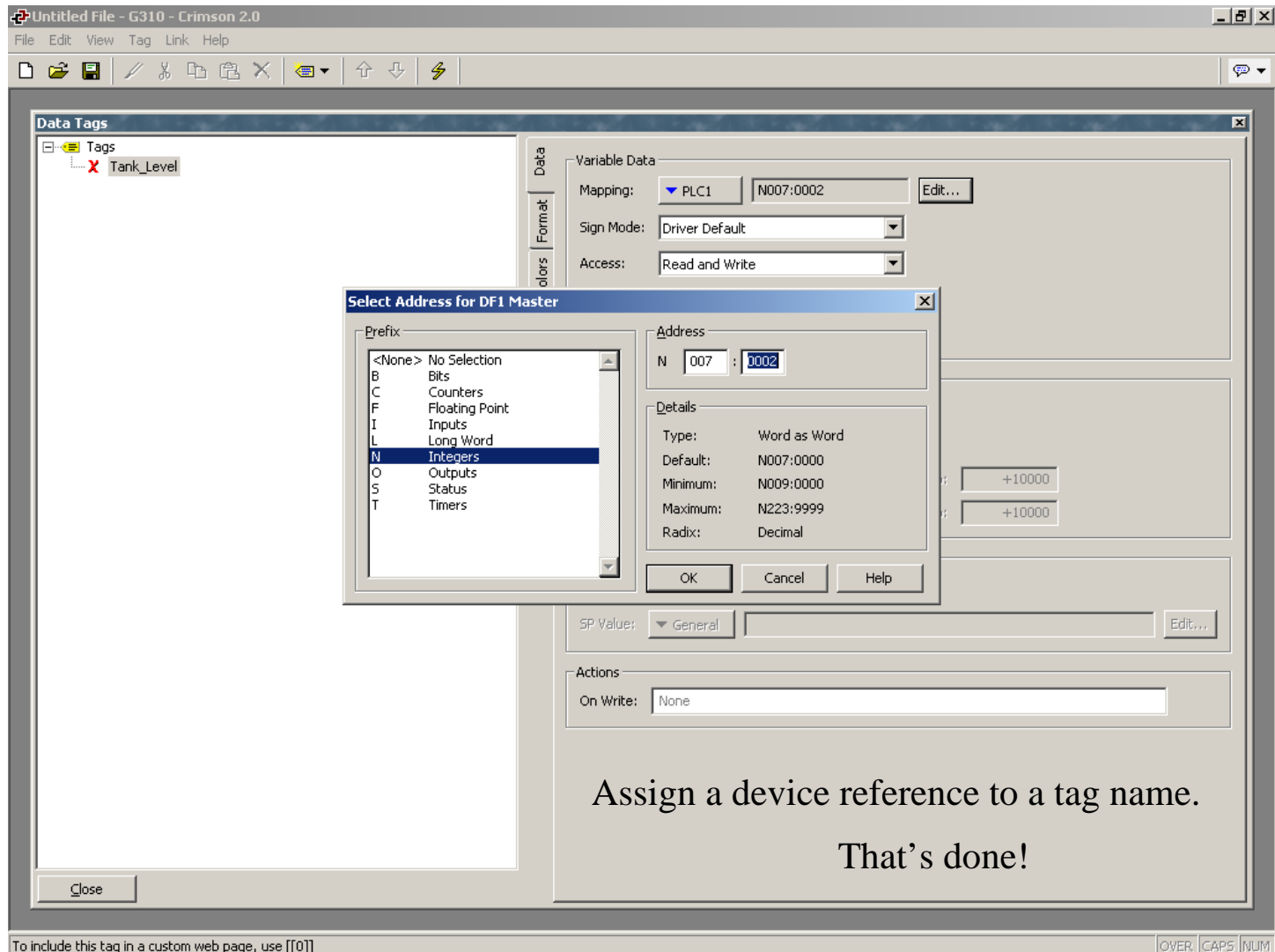
- Free Software at [www.redlion.net](http://www.redlion.net)

# Crimson 2.0 - Driver selection

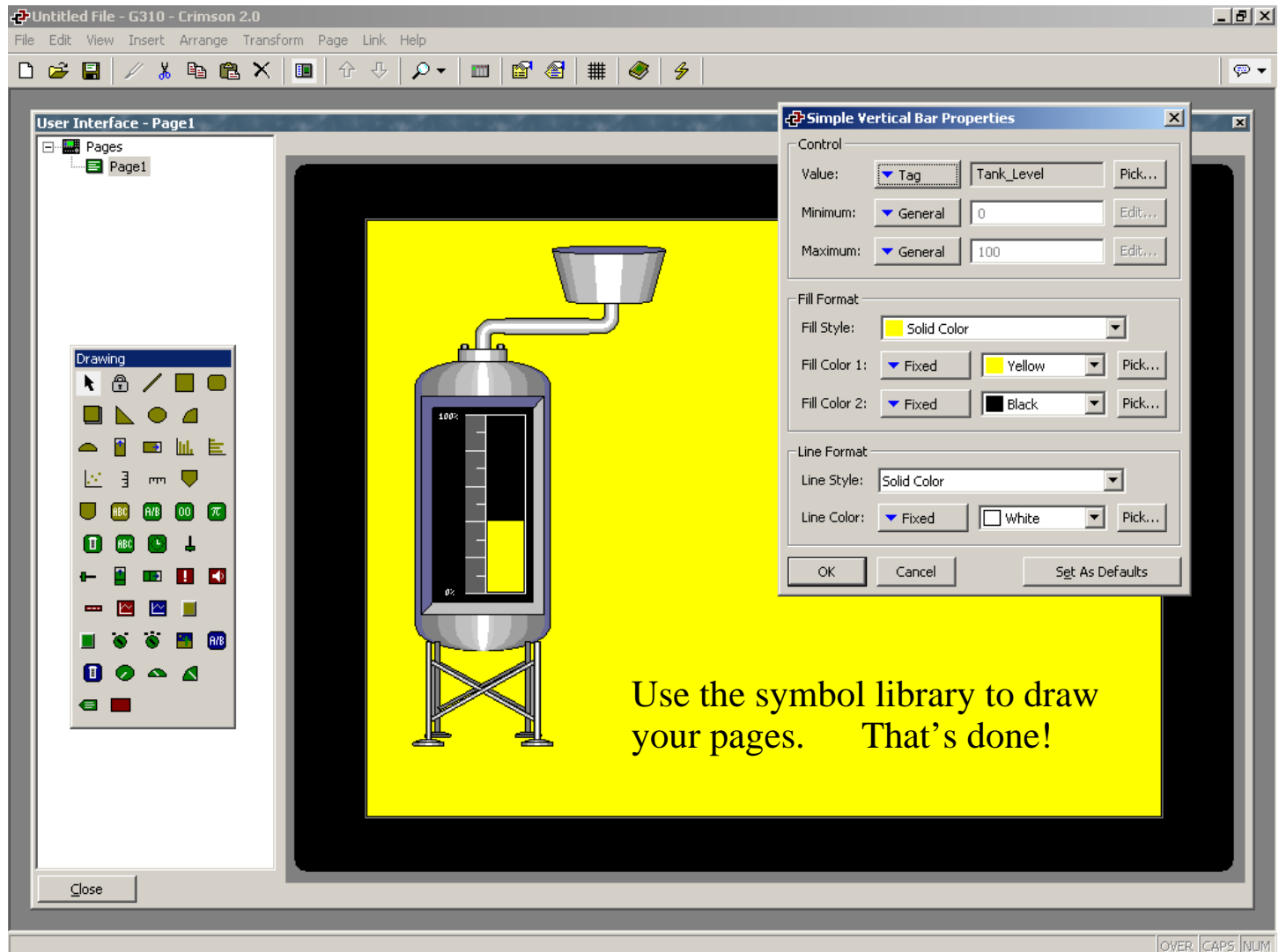




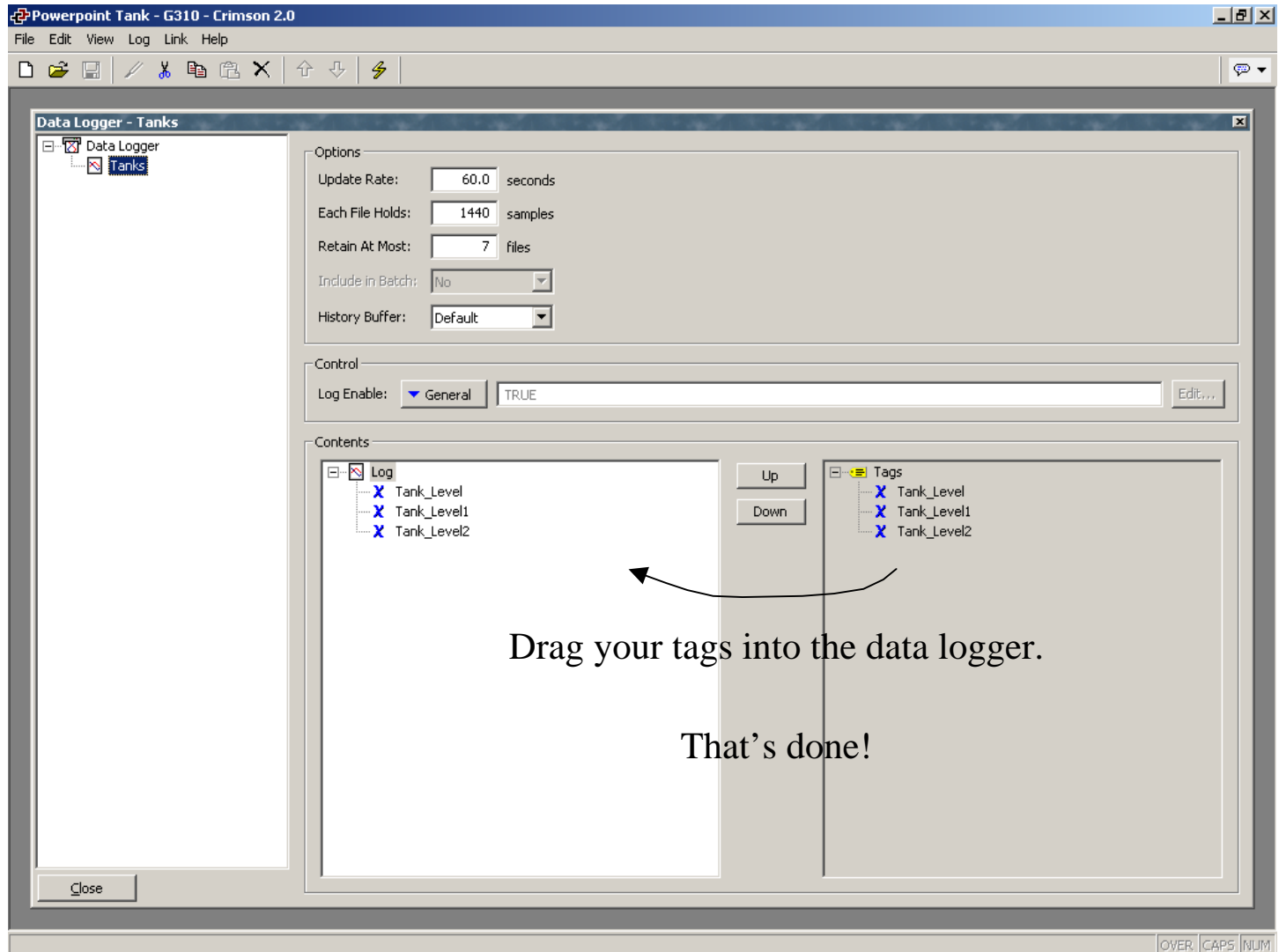
# Crimson 2.0 - Configure your tags



# Crimson 2.0 – Design your pages

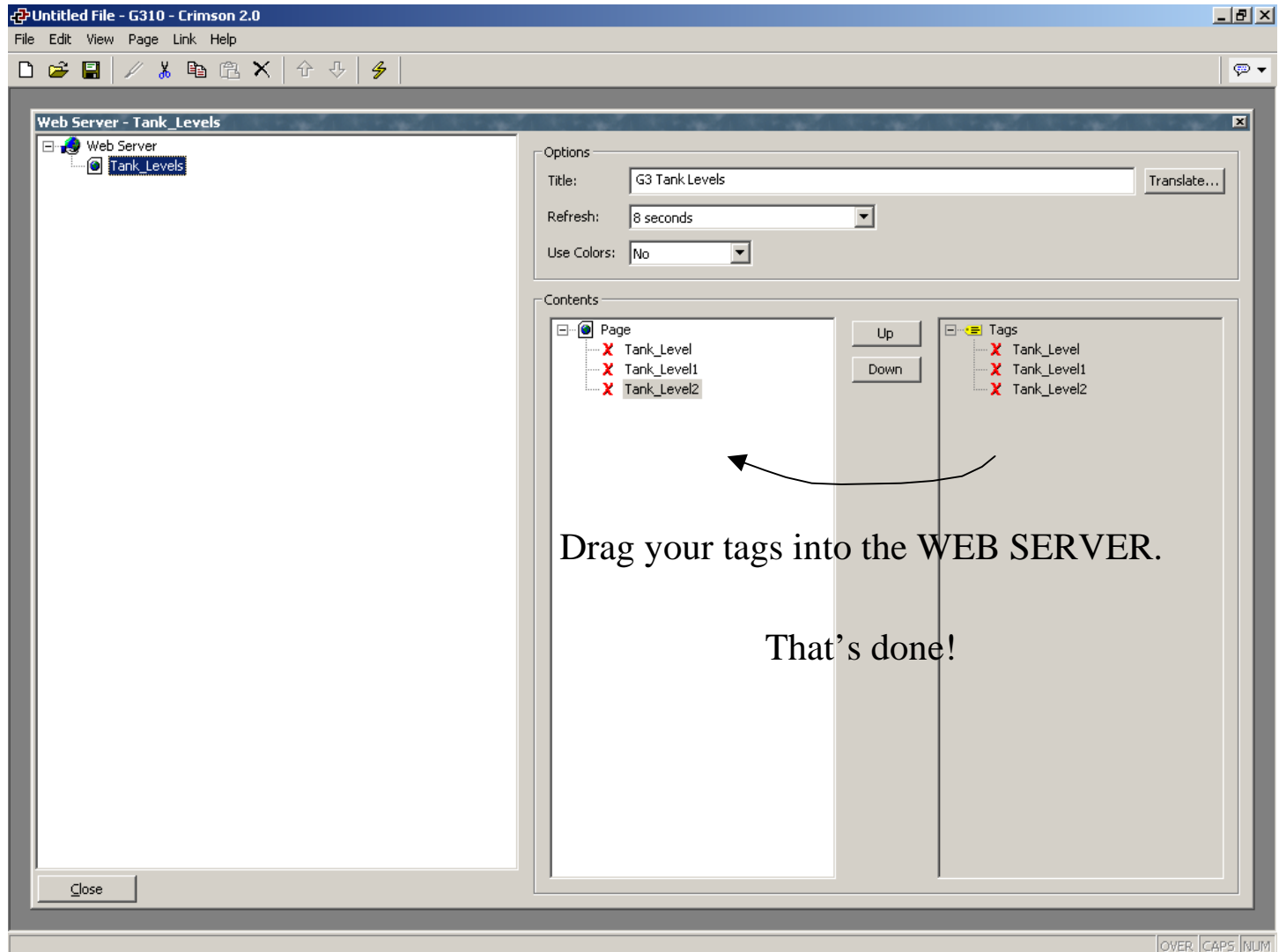


# Crimson 2.0 – Need a data logger ?



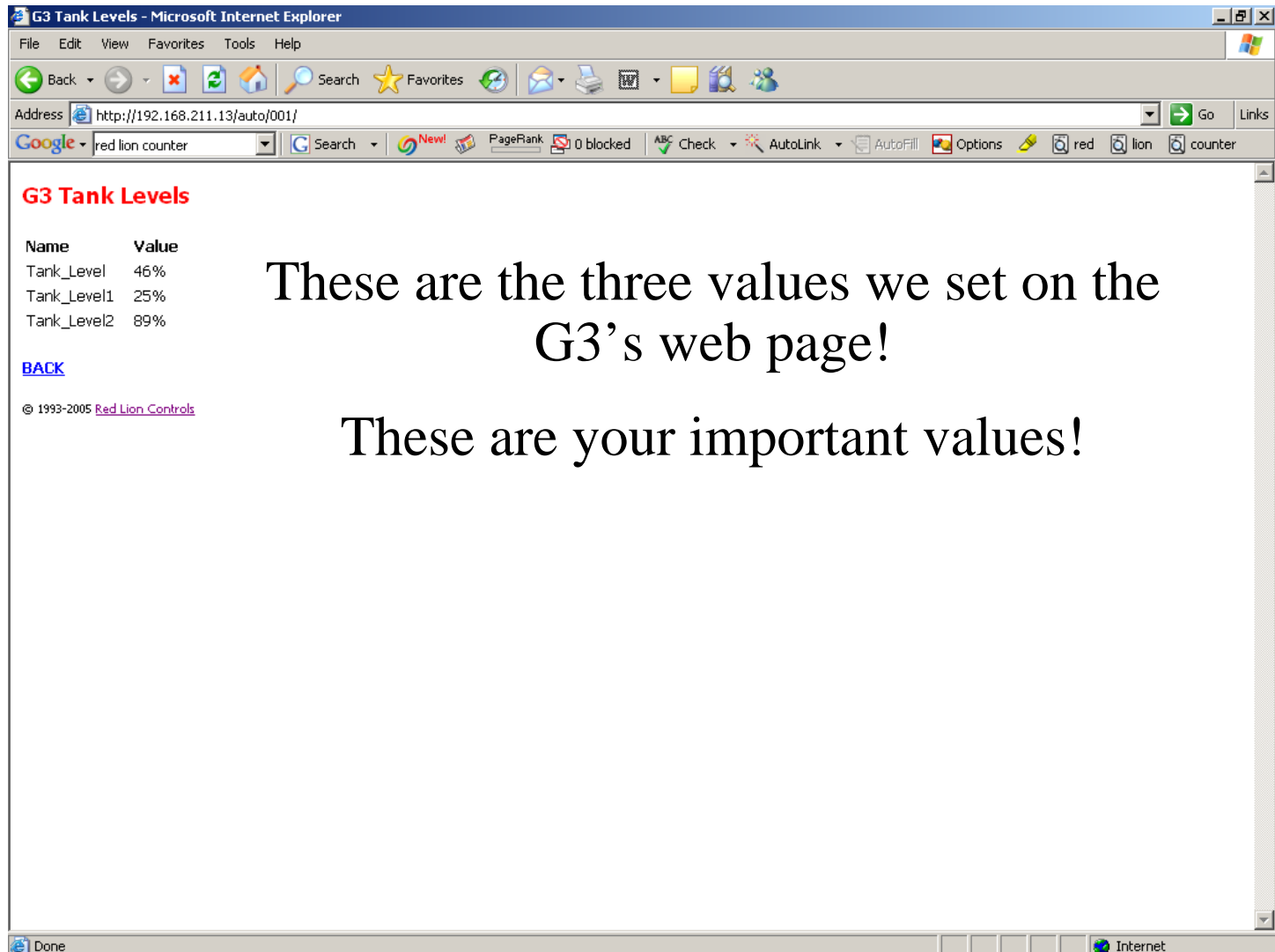
# Crimson 2.0 – Built in Web Server

- View your important values via the Web.



# Crimson 2.0 – Web Server

- Connect directly to the G3 panel using Internet Explorer.

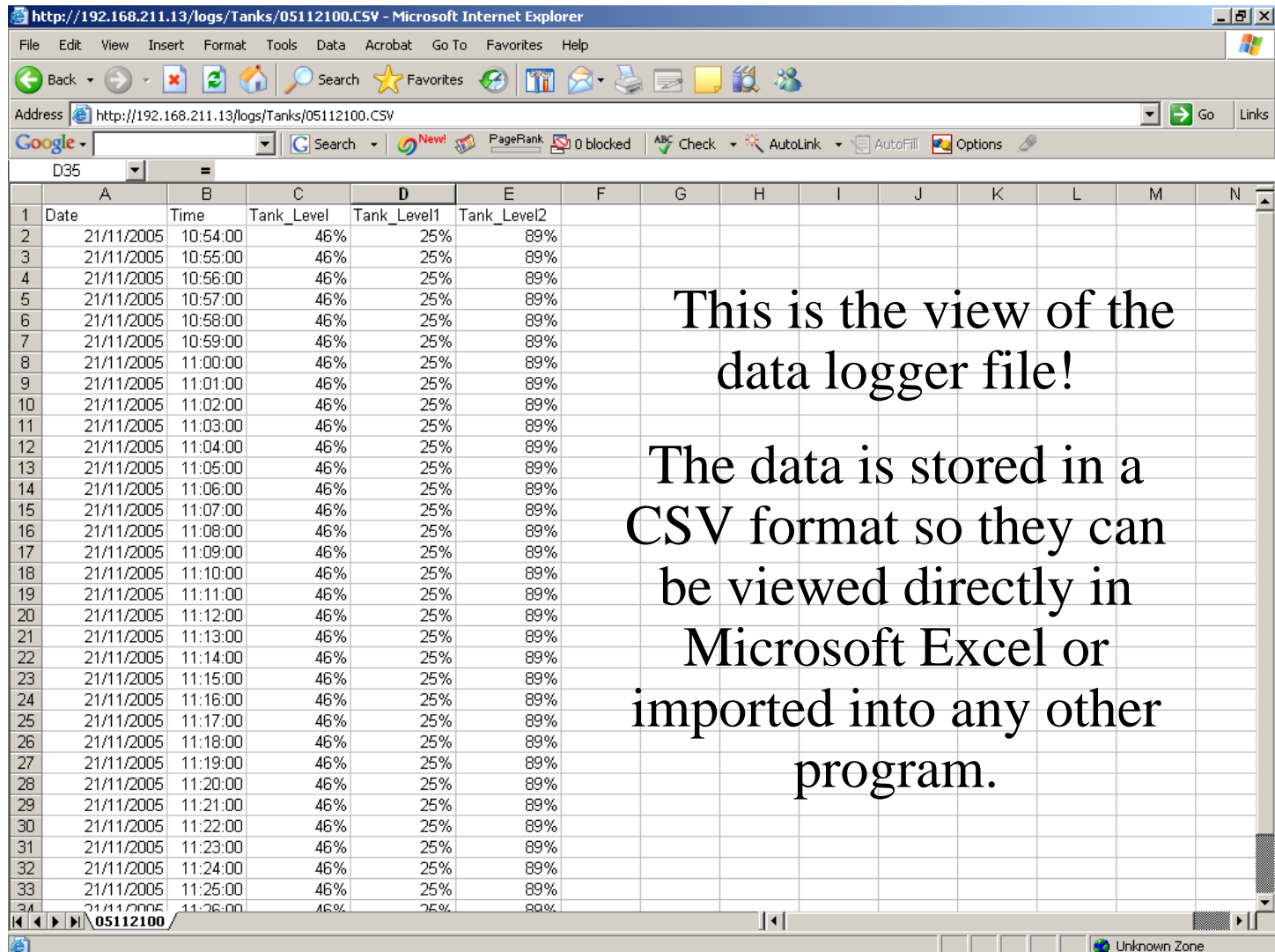


These are the three values we set on the  
G3's web page!

These are your important values!

# Crimson 2.0 – Web Server

- Connect directly to the G3 panel using Internet Explorer.



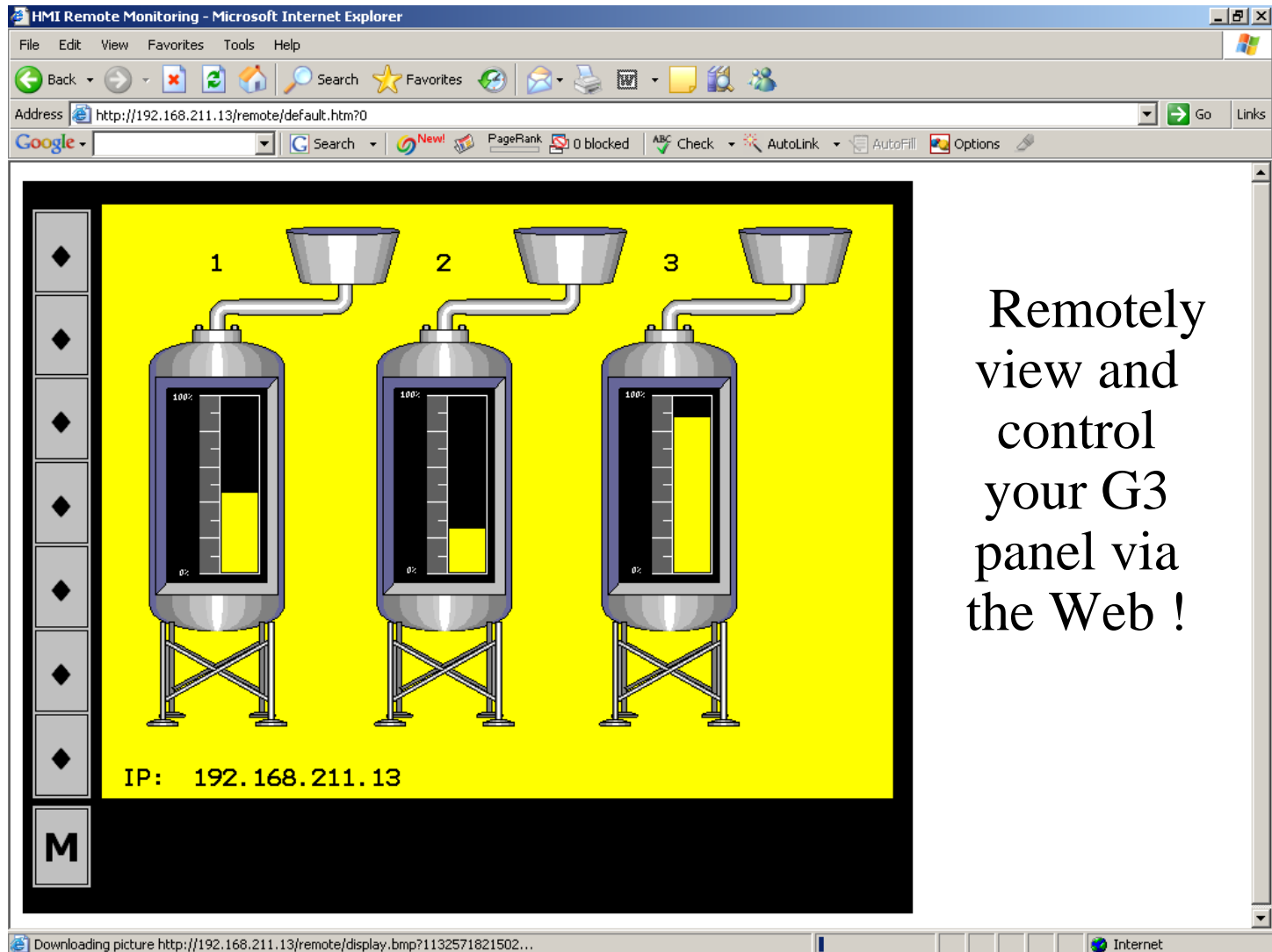
This is the view of the data logger file!

The data is stored in a CSV format so they can be viewed directly in Microsoft Excel or imported into any other program.

	A	B	C	D	E	F	G	H	I	J	K	L	M	N
1	Date	Time	Tank_Level	Tank_Level1	Tank_Level2									
2	21/11/2005	10:54:00	46%	25%	89%									
3	21/11/2005	10:55:00	46%	25%	89%									
4	21/11/2005	10:56:00	46%	25%	89%									
5	21/11/2005	10:57:00	46%	25%	89%									
6	21/11/2005	10:58:00	46%	25%	89%									
7	21/11/2005	10:59:00	46%	25%	89%									
8	21/11/2005	11:00:00	46%	25%	89%									
9	21/11/2005	11:01:00	46%	25%	89%									
10	21/11/2005	11:02:00	46%	25%	89%									
11	21/11/2005	11:03:00	46%	25%	89%									
12	21/11/2005	11:04:00	46%	25%	89%									
13	21/11/2005	11:05:00	46%	25%	89%									
14	21/11/2005	11:06:00	46%	25%	89%									
15	21/11/2005	11:07:00	46%	25%	89%									
16	21/11/2005	11:08:00	46%	25%	89%									
17	21/11/2005	11:09:00	46%	25%	89%									
18	21/11/2005	11:10:00	46%	25%	89%									
19	21/11/2005	11:11:00	46%	25%	89%									
20	21/11/2005	11:12:00	46%	25%	89%									
21	21/11/2005	11:13:00	46%	25%	89%									
22	21/11/2005	11:14:00	46%	25%	89%									
23	21/11/2005	11:15:00	46%	25%	89%									
24	21/11/2005	11:16:00	46%	25%	89%									
25	21/11/2005	11:17:00	46%	25%	89%									
26	21/11/2005	11:18:00	46%	25%	89%									
27	21/11/2005	11:19:00	46%	25%	89%									
28	21/11/2005	11:20:00	46%	25%	89%									
29	21/11/2005	11:21:00	46%	25%	89%									
30	21/11/2005	11:22:00	46%	25%	89%									
31	21/11/2005	11:23:00	46%	25%	89%									
32	21/11/2005	11:24:00	46%	25%	89%									
33	21/11/2005	11:25:00	46%	25%	89%									
34	21/11/2005	11:26:00	46%	25%	89%									

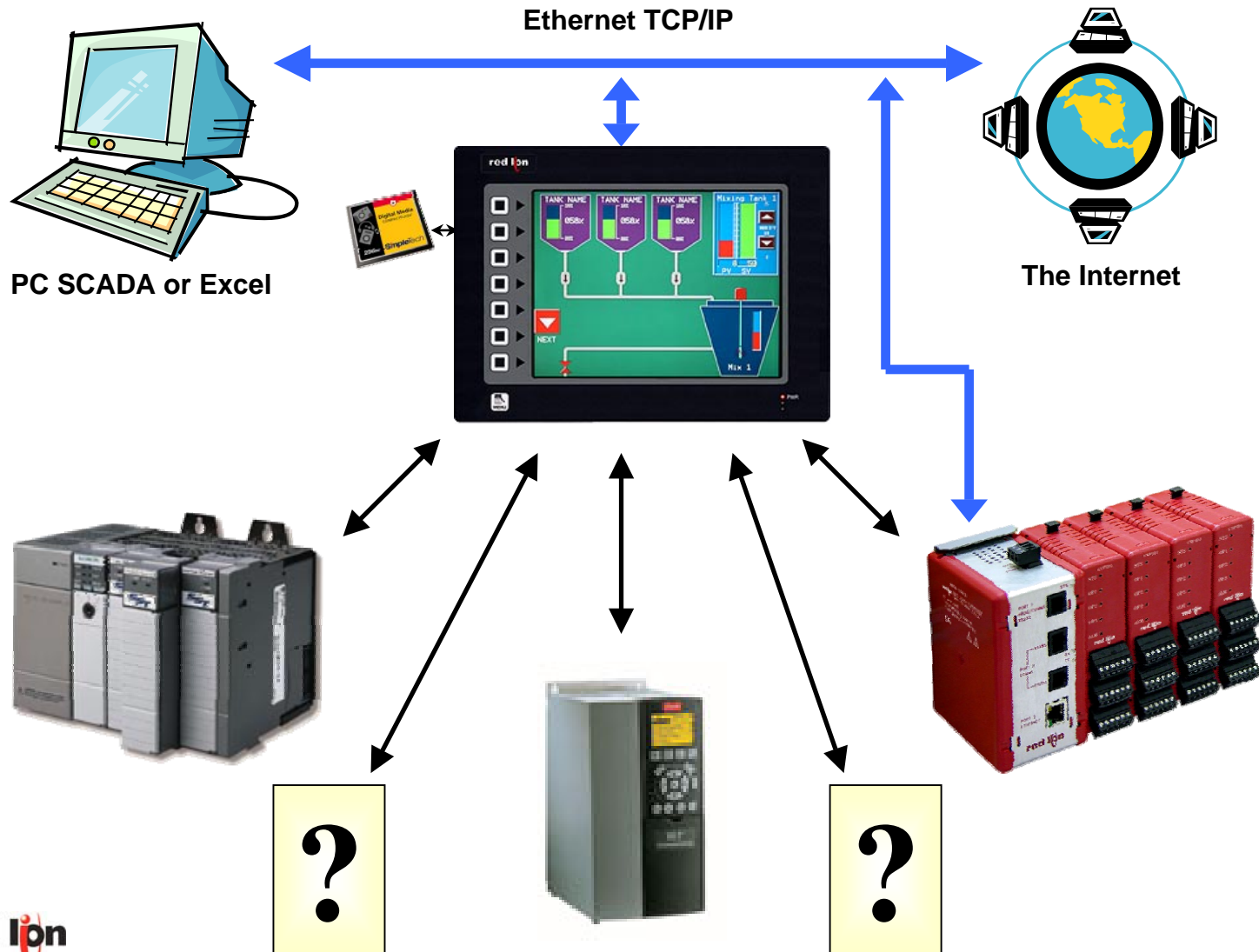
# Crimson 2.0 – Web Server

- Connect directly to the G3 panel using Internet Explorer.



Remotely  
view and  
control  
your G3  
panel via  
the Web !

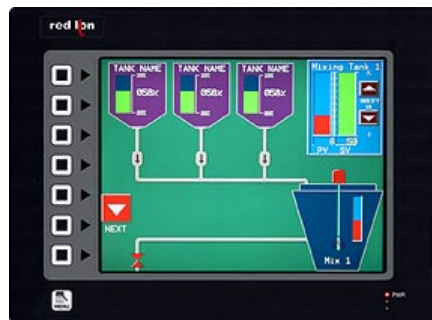
# Putting It All Together





# Putting It All Together

- You make YOUR choice of best-in-class PLC, drive, etc.
- Modular Controller looks after all PID, data collection, and I/O requirements.
- G3 operator panels talks to all the devices in your panel.
- G3 moves data between devices, and exposes it on Ethernet.
- G3 logs data for regulatory compliance or quality control.
- Web server allows easy access to recorded data.
- Remote monitoring and control facilities simplify diagnostics.





The G3 Series Operator Panels  
It's easy!