

# efector100



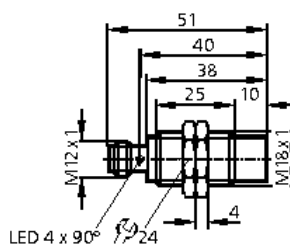
Inductive proximity switches

## IGC208

IGB3012-APKG/M/US  
Metal thread M18 x 1  
Plug and socket

Increased sensing range  
gold-plated contacts

Sensing range 12mm [nf]  
non-flush mountable



### Electrical design

#### Output

DC PNP

normally closed

Operating voltage [V]

10...36 DC

Current rating [mA]

100

Short-circuit protection

pulsed

Reverse polarity protection

yes

Overload protection

yes

Voltage drop [V]

&lt; 2.5

Current consumption [mA]

&lt; 10

Real sensing range [mm]

12 ± 10 %

Operating distance [mm]

0...9.7

Switch-point drift [% / Sr]

-10...10

Hysteresis [% / Sr]

3...15

Switching frequency [Hz]

300

Correction factors

mild steel = 1 / stainless steel approx. 0.7 / brass approx. 0.5 / Al approx. 0.4 /  
Cu approx. 0.3

Operating temperature [°C]

-25...70

Protection

IP 68 \*) ☐

EMC

IEC 1000-4-2 / EN 61000-4-2: 4 kV / CD / 8 kV AD

IEC 1000-4-3 / EN 61000-4-3: 10 V/m, 80...1000 MHz

IEC 1000-4-4 / EN 61000-4-4: 2 kV

IEC 1000-4-6 / EN 61000-4-6: 10 V / 0.15...80 MHz

EN 55011: class B

Housing material

brass special coated; active face: LCP

Function display

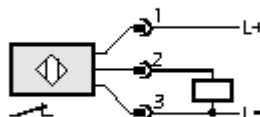
Switching status LED

yellow (4 x 90°)

Connection

M12 connector; gold-plated contacts

Wiring



Remarks

\*) "Coolant"

Accessories (included)

2 lock nuts

ifm electronic gmbh · Teichstraße 4 · D-45127  
Essen

— We reserve the right to make technical alterations without prior notice. — GB - IGC208 — 06.03.2003