

efector100



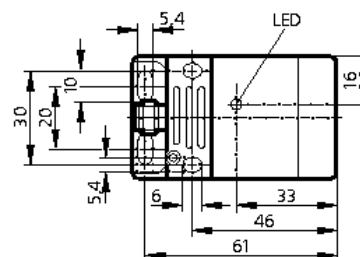
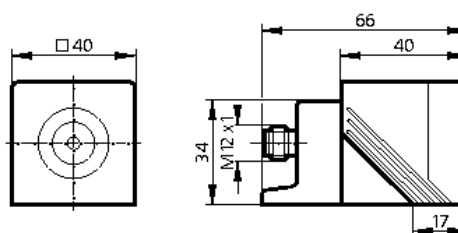
Inductive proximity switches

IM0053

IMC2035-ABOA/SL/LS-100FK
Rectangular plastic
Plug and socket

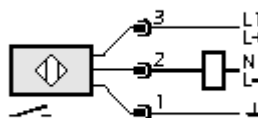
Increased sensing range

Sensing range 35mm [nf]
non-flush mountable



Electrical design	AC/DC
Output	normally open
Operating voltage [V]	20...250 AC/DC
Current rating (continuous) [mA]	350 AC (...50 °C) / 250 AC (...70 °C) / 100 DC
Current rating (peak) [mA]	\hat{i} : 2.2 A (20 ms / 0.5 Hz)
Minimum load current [mA]	1.9
Short-circuit protection	no
Reverse polarity protection	no
Overload protection	no
Voltage drop [V]	< 6.5 AC / < 6 DC
Leakage current [mA]	< 0.8
Operating distance [mm]	0...28.3
Hysteresis [% / Sr]	3...15
Switching frequency [Hz]	20 AC / 50 DC
Correction factors	mild steel = 1 / stainless steel approx. 0.8 / brass approx. 0.4 / Al approx. 0.4 / Cu approx. 0.3
Operating temperature [°C]	-25...70
Protection	IP 67, I
EMC	EN 60947-5-2; EN 55011 class B
Housing material	PPE; connector housing: brass Optalloy-plated; bracket: PPS
Function display	
Switching status LED	yellow
Connection	M12 connector

Wiring



Remarks

5 positions of the active zone possible

ifm electronic gmbh · Teichstraße 4 · D-45127
Essen

— We reserve the right to make technical alterations without prior notice. — GB - IM0053 — 16.03.2004

