

efector100

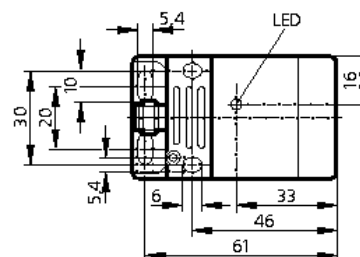
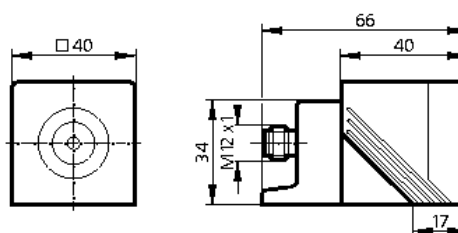


Inductive proximity switches

IM0054

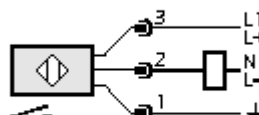
IMC2020BABOA/SL/LS-100FK
Rectangular plastic
Plug and socket

Sensing range 20mm [f]
flush mountable



Electrical design	AC/DC
Output	normally open
Operating voltage [V]	20...250 AC/DC
Current rating (continuous) [mA]	350 AC (...50 °C) / 250 AC (...70 °C) / 100 DC
Current rating (peak) [mA]	\hat{i} : 2.2 A (20 ms / 0.5 Hz)
Minimum load current [mA]	1.9
Short-circuit protection	no
Reverse polarity protection	no
Overload protection	no
Voltage drop [V]	< 6.5 AC / < 6 DC
Leakage current [mA]	< 0.8
Real sensing range [mm]	20 ± 10 %
Operating distance [mm]	0...16.2
Hysteresis [% / Sr]	3...15
Switching frequency [Hz]	25 AC / 140 DC
Correction factors	mild steel = 1 / stainless steel approx. 0.9 / brass approx. 0.4 / Al approx. 0.4 / Cu approx. 0.3
Operating temperature [°C]	-25...70
Protection	IP 67, I
EMC	EN 60947-5-2; EN 55011 class B
Housing material	PPE; bracket: PPS; connector housing: brass Optalloy-plated
Function display Switching status LED	yellow
Connection	M12 connector

Wiring



Remarks

5 positions of the active zone possible

