

CRIMSON 2 TUTORIAL

TU0002

Title: Protocol Converter

DESCRIPTION



With the G3's powerful protocol converter, you have the ability to exchange data between any and all connected devices. With a few clicks of the mouse, you can map a setpoint from a PLC to a variable speed drive, or provide a PLC program with information as to the status of a PID controller.

BENEFITS

- Save time by avoiding communication card setup and programming in PLCs and other devices,
- Exchange data between connected devices seamlessly,
- No extra hardware required when adding new equipment.

EXAMPLE

An OEM provides options for end users on his weighting system. By connecting the option to available communication ports on the G3, exchanging data with the controller is done in minutes with no extra programming or hardware necessary.

PROTOCOL CONVERSION IN JUST 5 STEPS

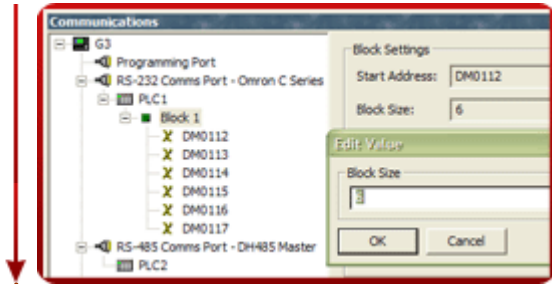
Step 1 Select your first protocol,



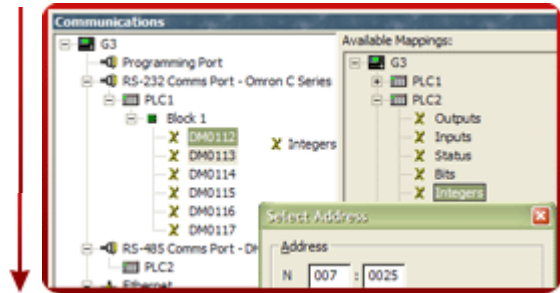
Step 2 Select your second protocol,



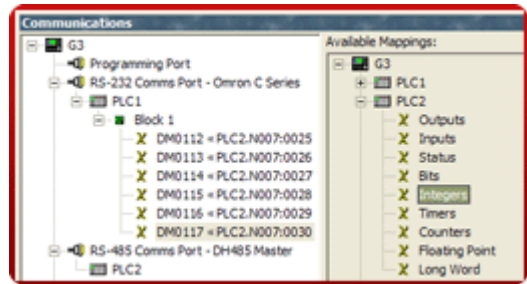
Step 3 Define a block to exchange data,



Step 4 Drag and drop your other device's data,



Step 5 Ready to go!



Reference: <http://www.redlion.net/g3features/G3 Feature - Converter.html>

For more information on Crimson 2.0, refer to the manual.