

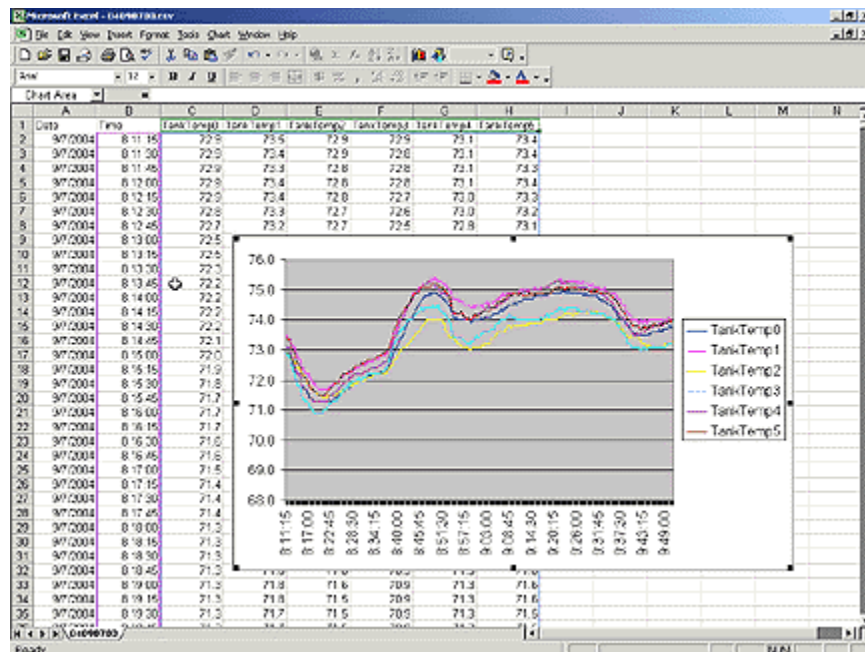


CRIMSON 2 TUTORIAL

TU0022

Title: Data Logging

DESCRIPTION



The G3 will log tags at user-programmable rates, and automatically time/date stamp them. The information is stored in open CSV file format, allowing you to access them with virtually any application, such as Microsoft Excel.

BENEFITS

- Record your system process value for fault finding or process improvement
- Facilitate preventive maintenance by monitoring critical area of your system.
- Built in data logger provides ready to use data for review.

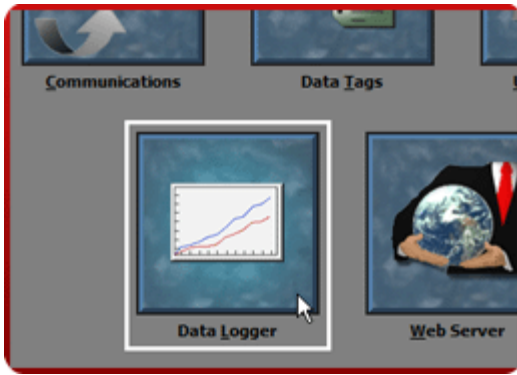
EXAMPLE

A cold storage facility records the multiple fridges temperatures for surveillance purpose and liability. By also monitoring doors status, reaction time to reach the temperature set point gives a good indicator of the compressor health, therefore providing tips to maintenance and avoiding future failures.

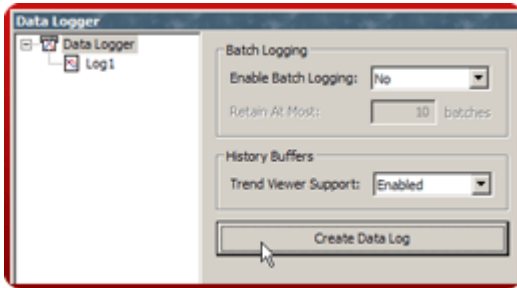


DATA LOGGING IN 6 STEPS

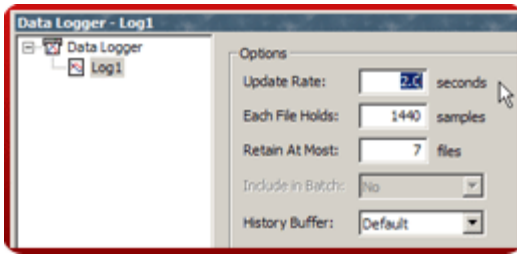
Step 1 Enter the "Data Logger" module,



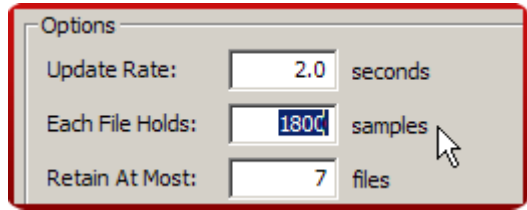
Step 2 Create a data log,



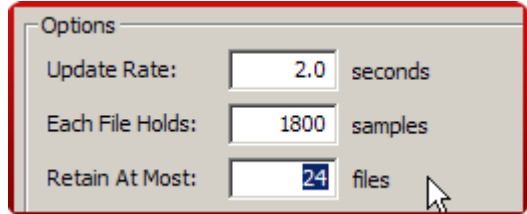
Step 3 Define the data logging sample rate,



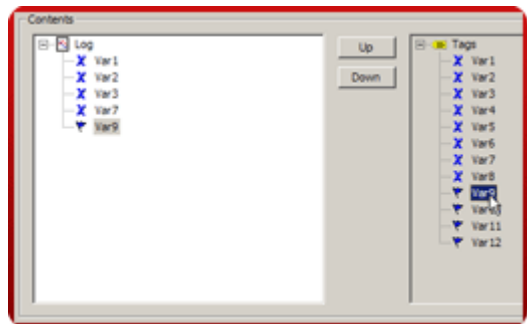
Step 4 Define the number of samples per file,



Step 5 Define the maximum number of files. The G3 automatically erases older files as new files are added,



Step 6 Add tags to the log by double-clicking them,



In this example, the G3 will log the last 24 hours of data, with each file representing one hour of samples.

Data Logging complete!

Reference: <http://www.redlion.net/g3features/G3 Feature - Data Logging.html>

For more information on Crimson 2.0, refer to the manual.