

CRIMSON 2 TUTORIAL

TU0026

Title: Emulator

DESCRIPTION



The Emulator provides a unique facility to design and test your application. This not only allows you to test the user interface portion of your G3 HMI configuration; it also allows you to test data logging and even the web server!

BENEFITS

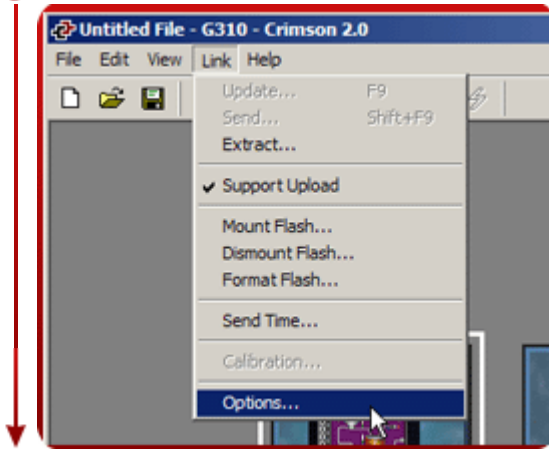
- Test your database directly on computer, no hardware required.
- Visualize the web server and log files to preview data available for your customer.
- Simplify database development and save time by testing your program enhancement straight away.

EXAMPLE

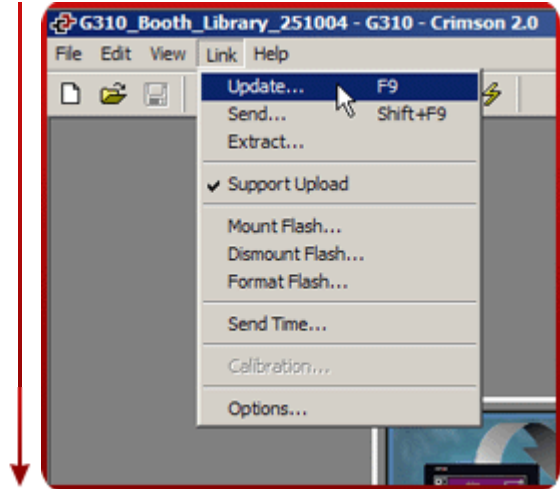
A special purpose machine manufacturer develops a new database for each new project. The emulator gives him the opportunity to review and test his database design before hardware delivery, saving time when on site testing.

SETTING UP THE EMULATOR

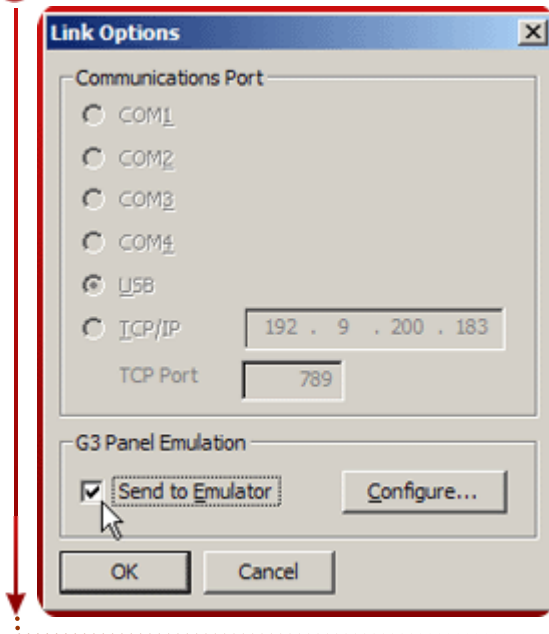
Step 1 Click on Link>Option,



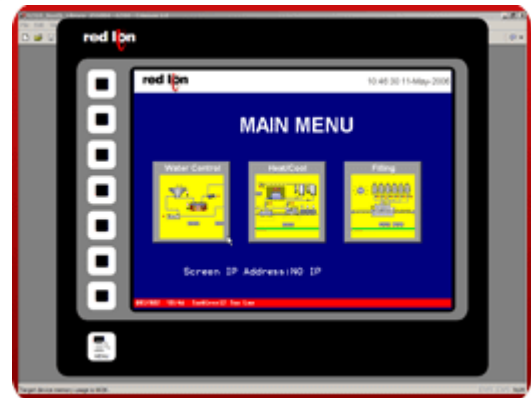
Step 3 Click on Link>Update or F9 to download your application in the Emulator,



Step 2 Select "Send to Emulator",



Step 4 The emulated G3 pops up on your PC screen,



Emulator setup complete!

Reference: <http://www.redlion.net/g3features/G3 Feature - Emulator.html>

For more information on Crimson 2.0, refer to the manual.